

FT2257/6



CHECK VALVES (PISTON)

They are inserted in branches of the circuit where the free flow in one direction is allowed and the return flow in the opposite direction is not possible. A lasting and hermetic seal is ensured by the conical valve poppet, which is a reliable mechanical solution. The spring in high-resistance material is housed in such a way that it does not close as a pack during the opening phase. The external configuration of the body makes it easy to seize the piece during the assembling. **They are available with different calibrations of the load pressure (0,5 standard and 2-4-6-8-10 bars).**

On request

- NPT threads

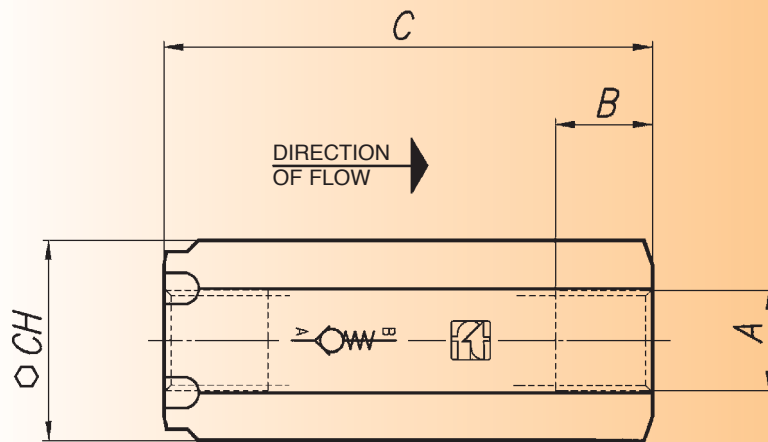
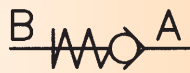


materials

Body	AISI 316 stainless steel
Check valve	AISI 316 stainless steel
Spring	AISI 316 stainless steel
Threaded end-plate	AISI 316 stainless steel

example for ordering

Code	Type	Calibration
FT 2257/6	12	-



dimensions

Type	A UNI 338	B	C	CH	Weight kg
18	1/8"G	8,5	46	17	0,075
14	1/4"G	12,5	63	22	0,165
38	3/8"G	12,5	68	27	0,260
12	1/2"G	15,5	80,5	32	0,415
34	3/4"G	17	99,5	36	0,605
100	1"G	20	117	46	1,170
114	1 1/4"G	22	134,5	55	1,850
112	1 1/2"G	24	159	65	3,130
200	2"G	27	198	75	4,900

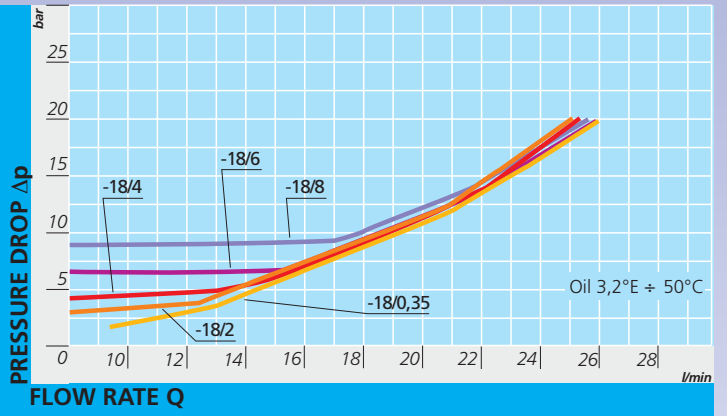
technical data

Type	Working pressure bar	Minimum working Δp bar	Working temp. °C	Filtration grade μm absolute
18	400	1600	-20° / +130°C	25
14	400	1600	-20° / +130°C	25
38	400	1600	-20° / +130°C	25
12	400	1600	-20° / +130°C	25
34	400	1600	-20° / +130°C	25
100	320	1300	-20° / +130°C	25
114	320	1300	-20° / +130°C	25
112	320	1300	-20° / +130°C	25
200	320	1300	-20° / +130°C	25

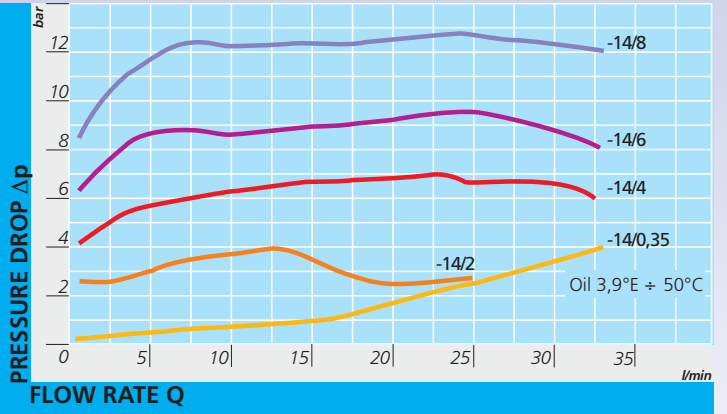




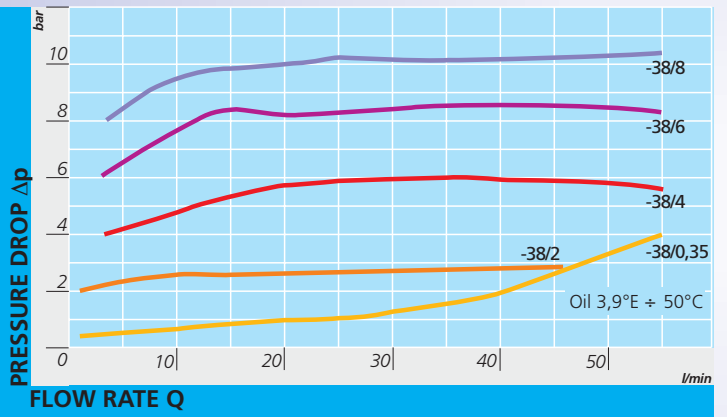
FT 2257/6 - 18



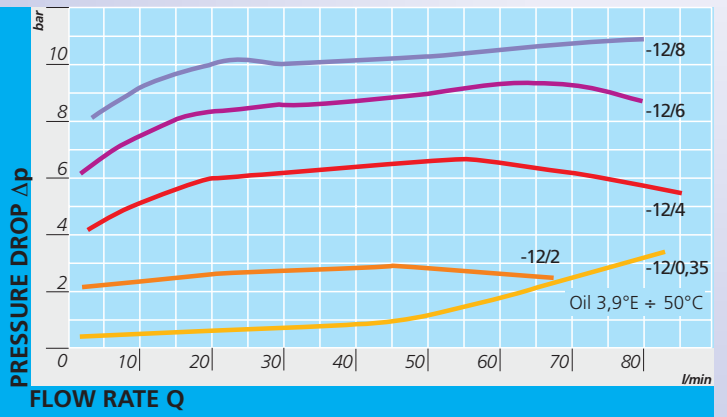
FT 2257/6 - 14



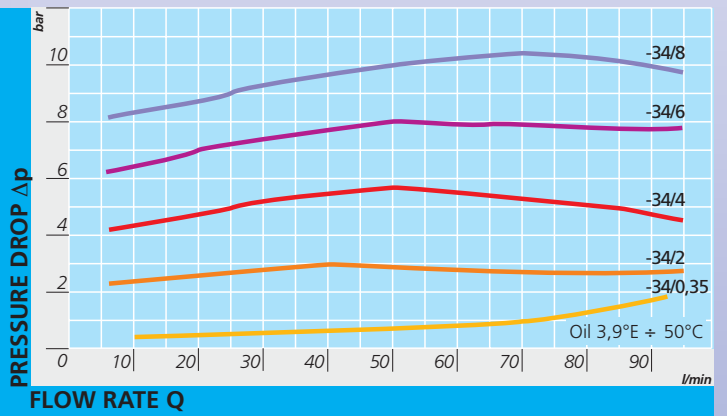
FT 2257/6 - 38



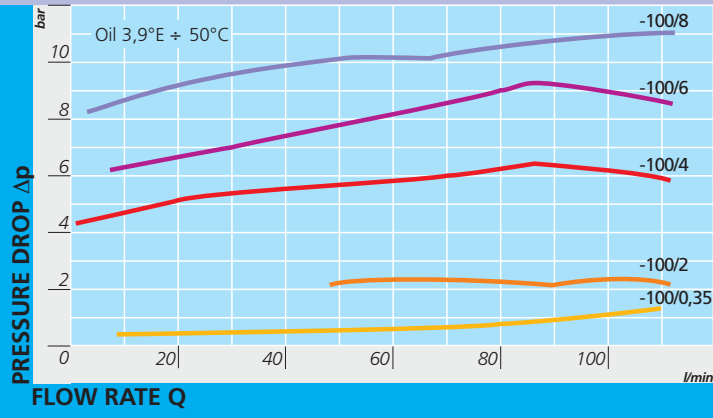
FT 2257/6 - 12



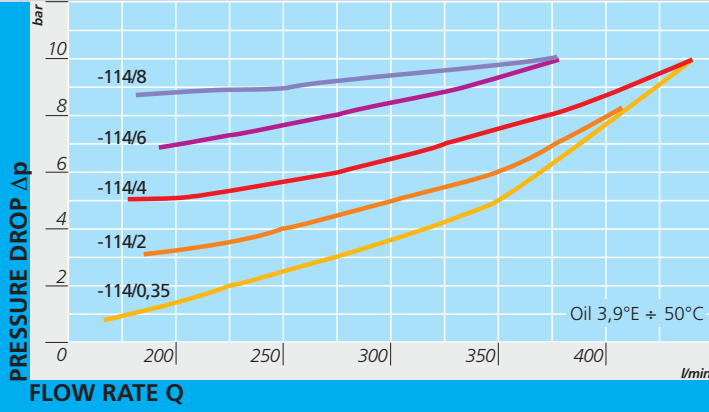
FT 2257/6 - 34



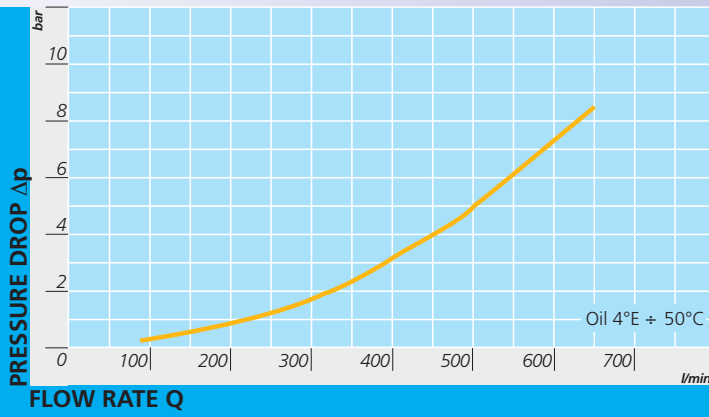
FT 2257/6 - 100



FT 2257/6 - 114



FT 2257/6 - 112



FT 2257/6 - 200

